

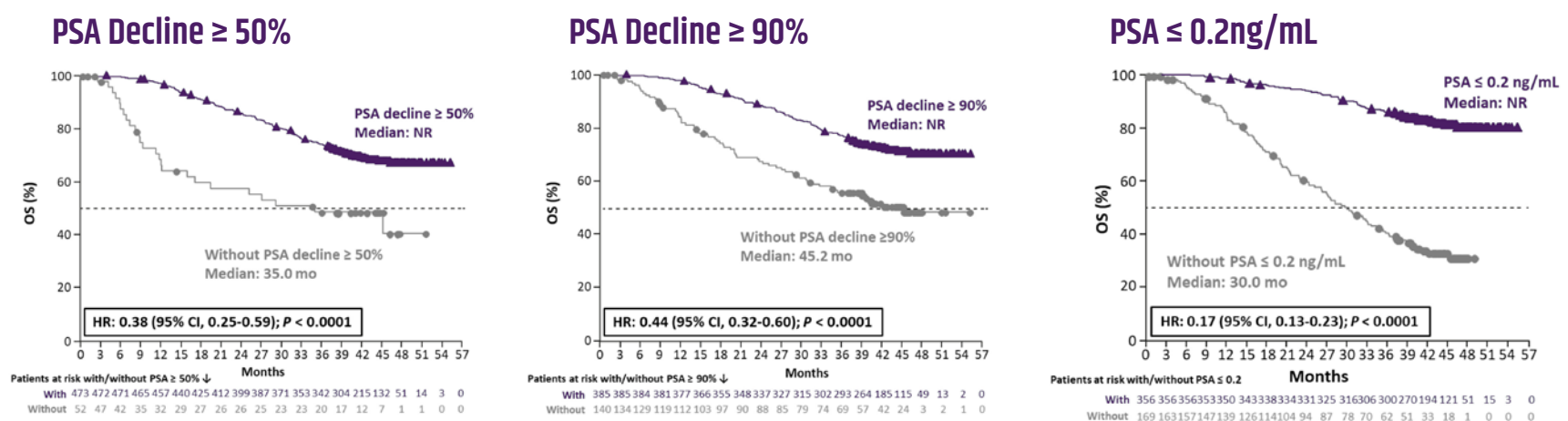
What does a Rapid and Deep PSA Response mean to you and your patients?

1. Improved OS¹

OS by Achievement of PSA Decline in ERLEADA[®] + ADT from TITAN, for broad population of mCSPC patients at median follow up of 44.0 months¹

- Presented by Professor Kim N. Chi at AUA Conference, 10-13 September 2021

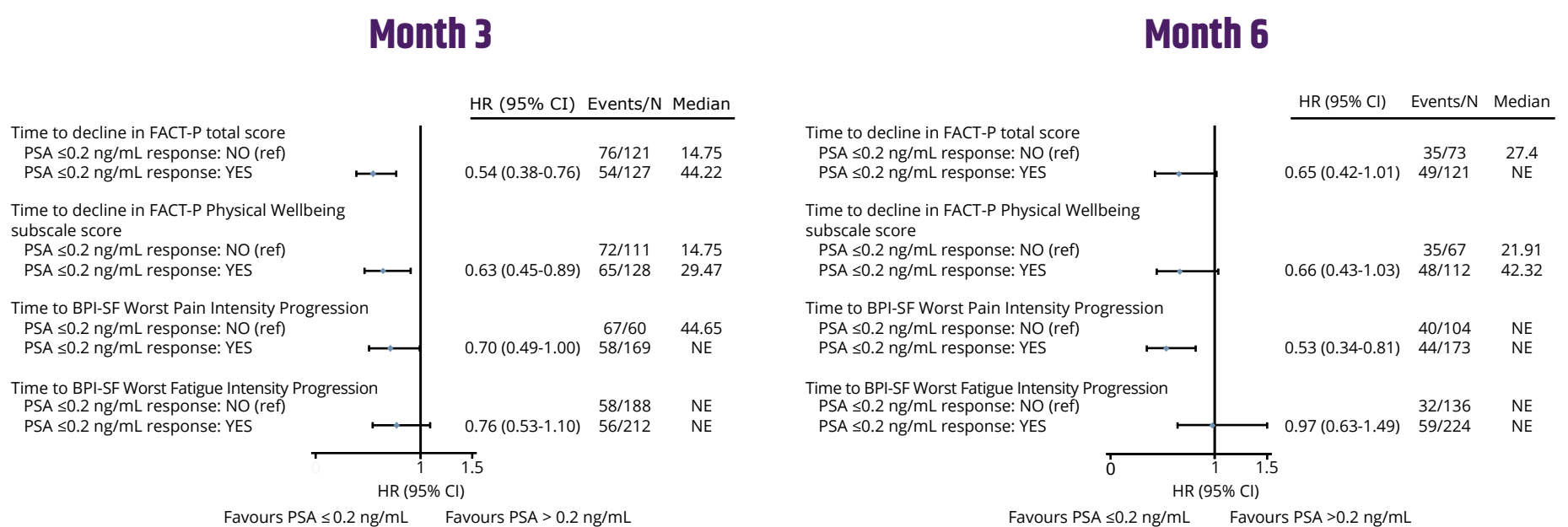
ERLEADA[®] + ADT demonstrated a rapid, deep and durable PSA decline¹



2. Maintenance of HRQoL²

Association of PSA Decline at Month 3 and Month 6 with HRQoL Measures with ERLEADA[®] + ADT from TITAN, for broad population of mCSPC patients at median follow up of 44.0 months²

- Presented by Prof. Eric J. Small at ASCO GU Cancers Symposium, 17-19 February 2022



Achievement of faster and deeper declines in PSA with ERLEADA[®] had maintenance of HRQoL, improved patient-reported physical wellbeing and reduce risk of worsening pain and fatigue intensity²

FASTER, DEEPER AND DURABLE PSA RESPONSE
 may mean more than just a psychological endpoint.^{1,2}
 Does the data reflect your real-world experience?

Abbreviations:

PSA: prostate specific antigen, OS: overall survival, NR: not reached, mo: months, HR: hazard ratio, CI: confidence interval, mCSPC: metastatic castration-sensitive prostate cancer, QoL: quality of life, HRQoL: health-related quality of life, BPI-SF: Brief Pain Inventory-Short Form, FACT-P: Functional Assessment of Cancer Therapy-Prostate, NE: not estimable, PRO: patient reported outcome, AUA: American Urological Association, ASCO: American Society of Clinical Oncology, GU: Genitourinary

Reference:

- Chi KN, et al. AUA 2021. Presentation PD34.
- Small EJ, et al. Poster presented at ASCO GU Cancers Symposium, San Francisco, USA, 17-19 February 2022. Abstract 73.

